

Posiflex leads POS interoperability revolution at NRF 2017

RSM and Shift4 to run Microsoft POS demos from Posiflex Booth #3071

SAN FRANCISCO, Calif. (Jan. 10, 2017) -- [Posiflex](#) has announced it will showcase a fully integrated retail hardware and software solution at the National Retail Federation (NRF) Big Show 2017 through partnership with [RSM US LLP](#) (RSM) and Shift4 Corporation. RSM is Microsoft's No. 1 integrator of POS software and will exhibit [Microsoft Dynamics 365](#) for Retail in Posiflex's booth (#3071), along with payment gateway provider [Shift4](#)'s feature-rich, secure payment processing solution.

"This is an exciting partnership for Posiflex because it provides retailers an opportunity to see a live, fully integrated, turn-key solution on a retail-hardened touch terminal, software and payment processing system," said Ron Chan, Posiflex marketing director.

"Microsoft's end-to-end retail offering solves the challenges retailers face from a Unified Commerce perspective," said Brion Reusche, retail solution architect with RSM. "However, a complete retail solution is more than just software. We understand, from our vast experience with middle-market retailers, that a fully realized retail solution pairs trusted hardware and payment providers — such as Posiflex and Shift4 — with a modern, end-to-end, Microsoft retail platform. Only with all the pieces in place do you ensure that a customer's experience is simple, seamless and differentiated."

"As merchant advocates, Shift4 offers our customers flexibility and options when it comes to payment processing. We are excited about the synergy that comes from three industry veterans partnering to present a best-in-class solution," said Daniel Montellano, Shift4's vice president of strategic business development. "With reliable hardware from Posiflex, a full-featured point of sale from RSM, and seamless integration to Shift4's secure payment gateway, DOLLARS ON THE NET, merchants can see how payments should look, feel and operate in their environment from top to bottom."

RSM has tested Microsoft Dynamics 365 as interoperable on the Posiflex [XT5317](#) 17-inch projected capacitive terminal with choice of three powerful processors and PoweredUSB.

About Posiflex

Posiflex since 1989 has provided proven and highly reliable POS terminals to retail and hospitality with maximum uptime. Posiflex POS purpose-built terminals can run virtually any Windows software. Posiflex designs, engineers and manufactures all its own terminals, tablets and peripherals in Taiwan. [For more information](#)

Ron Chan
510-401-5894
ron.chan@posiflexusa.com
www.posiflexusa.com

About RSM US LLP

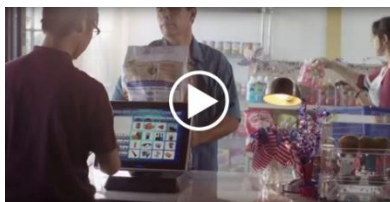
RSM US LLP is the leading provider of audit, tax and consulting services focused on the middle market, with 9,000 people in 86 offices nationwide. It is a licensed CPA firm and the U.S. member of RSM International, a global network of independent audit, tax and consulting firms with more than 38,300 people in over 120 countries. For more information, visit rsmus.com.

About Shift4

Shift4 is the last major player in the payments space to remain self-funded and merchant focused. A security heavyweight, we invented tokenization and own nine payment-security patents. We empower 33,000+ merchants with the flexibility to customize our payment processing solutions to fit their business. Learn more at shift4.com.



Posiflex XT5317 is a 17" projected capacitive touch terminal with scalable choice of Intel G1820, Core i3 or i5 CPU and up to 16 GB memory. Sleek folding base can house optional PoweredUSB, power adapter, backup battery and / or 8 port hub for clean cable management.

Video

<https://youtu.be/CbmGJnl7PVM>

Posiflex XT Series touch screen terminals has a long legacy of field tested and proven reliability. Retail hardened with the ability to run virtually any Windows software Posiflex POS hardware has withstood the test of time since 1984.