

**Posiflex Business Machines, Inc.**  
30689 Huntwood Avenue  
Hayward, CA 94544  
Tel: 510.429.7097  
888.968.1668  
Fax: 510.475.0982

**POSIFLEX™**  
Leaders in POS Terminal Technology

[www.posiflexusa.com](http://www.posiflexusa.com)

## **TP5800 System Fan Replacement**

### **Installation Guide**

Version 1.0

TP5800/TP8000 System Fans Replacement	Version: 1.00
Installation Guide	Date: 12/07/2009

## Revision History

Date	Version	Description	Author
12/07/2009	1.0	Initial version	P. Orais

## Reviewers

Name	Version	Designation	Date	Checked

TP5800/TP8000 System Fans Replacement	Version: 1.00
Installation Guide	Date: 12/07/2009

## Table of Contents

<b>1. Introduction .....</b>	<b>4</b>
Definitions, Acronyms, and Abbreviations .....	4
<b>2. Pre-Installation Requirements .....</b>	<b>4</b>
2.1 Required Tools .....	4
2.2 Required Component.....	5
<b>3. Installation.....</b>	<b>5</b>
3.1 Terminal Disassembly .....	5
3.2 TP5800 Series CPU Fan Replacement .....	8
3.3 Exhaust Fan replacement for TP5800 Series.....	8
3.6 Terminal Reassembly .....	9
<b>4. Service Completion .....</b>	<b>11</b>
<b>5. Contact Information .....</b>	<b>11</b>

TP5800/TP8000 System Fans Replacement	Version: 1.00
Installation Guide	Date: 12/07/2009

## 1. Introduction

This Rework Guide is meant to provide a thorough reference for the proper hardware modification, image installation and software configuration of OEM Model#: RS6315W8WEPUR-AB-V30

### Definitions, Acronyms, and Abbreviations

PBM	POSIFLEX Business Machines

## 2. Pre-Installation Requirements

Prior to performing service on the POSIFLEX terminal, you will need to make sure that you have the items outlined in this section prepared in advance.

### 2.1 Required Tools

The following tools are required for replacing system fans. Please see Figure 2-1 below for visual reference.

- #2 Phillips Screwdriver
- #0 Phillips Screwdriver



Figure 2-1



Figure 2-2

TP5800/TP8000 System Fans Replacement	Version: 1.00
Installation Guide	Date: 12/07/2009

## 2.2 Required Component

Component	Part Number
Exhaust Fan (Both Series)	20833200000
CPU Fan (TP5800)	36282000010

## 3. Installation

This section will guide you through replacement of the terminal CPU and Exhaust Fan. Please follow steps in proper order.

### 3.1 Terminal Disassembly

Begin disassembly by clearing the work area of debris that may get in the way of servicing the terminal. Be sure that there is proper room allocated for tools and small parts, as this will eliminate the possibility of losing these items. Looking at both sides of the terminal, you will notice the locking mechanism for holding the I/O panel cover in place (if still attached). Taking your 1/8" screwdriver, insert into both holes and turn in the Open direction as shown.



Then proceed to remove the I/O cable cover by inserting a finger and pulling away from the terminal.



Once the cable cover is removed, tilt machine back until port area is visible. Gently remove the 3-pin LED connector as shown below.



After the connector is removed, the bezel needs to be taken off of the terminal. Looking at the back of the terminal, you will notice 8 plastic tabs (2 on each side of the terminal). Begin one corner at a time, pulling these away from the terminal until the entire bezel is loose.



Once loose, carefully lift up on the bezel, pulling the LED cable through the square opening in the rear housing.



After removing the bezel, you will then need to locate the two chrome clips on the front side of the touch panel housing. Placing your index fingers on the outside of the metal housing, pull the clips back with your thumbs and lift up on the entire housing.



Set the bottom side of this housing down and rest it on the terminal. You will notice three cables continuing into the system. Locate the riser card plate as shown below. Push down on the clip and slide the plate to the right hand side. This should remove the plate.



Set the Riser Card plate down in a safe place and proceed to remove the riser card by firmly pulling directly upwards.



Remove the screw located on the bottom center.

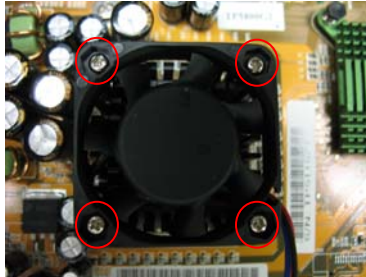


Slide down the chassis cover, and then remove it.



### 3.2 TP5800 Series CPU Fan Replacement

Remove 4 screws to separate the fan from the heat sink. Replace defective or worn out CPU fan with **36282000010**

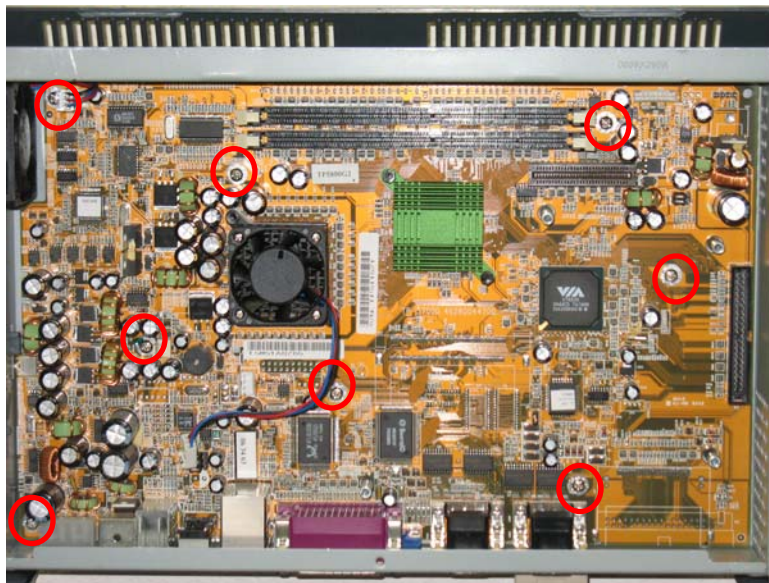


### 3.3 Exhaust Fan replacement for TP5800 Series

Replacing the exhaust fan requires **Mainboard** and **Chassis** disassembly.

#### Mainboard Disassembly

First, disconnect exhaust fan connector. Using the screwdriver #2, remove (8) screws and (4) more screws located on the front side of the system interface. Lift up MB and place it in a safe place.



TP5800/TP8000 System Fans Replacement	Version: 1.00
Installation Guide	Date: 12/07/2009

### Chassis Disassembly

Remove (4) screws on the center side and (6) screws along the sides of the metal chassis to separate it from the plastic housing.



Remove 4 screws located on the front side of the exhaust fan. Replace defective or worn out fans with **20833200000**. Make sure the front side w/ label is facing towards the metal chassis.



### 3.6 Terminal Reassembly

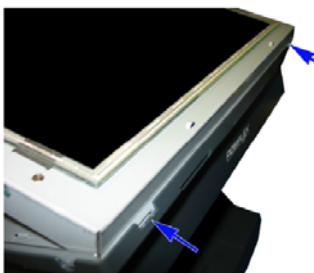
Install chassis cover back and apply screw down the middle.



Setting the LCD and Touch Panel assembly down on the machine, reseat the riser card. Take the Riser Card cover plate, press down and slide to the left, making sure that the plate is seated beneath all four blue metal tabs. Make sure that the cables come out as shown below.



Align the two (2) metal tabs at the top of the touch panel housing with the system housing and slide into place.



Rotate the bottom of the panel downward until it snaps into the two chrome tabs.



Take the bezel and carefully place the LED Cable through the opening in the rear housing.



TP5800/TP8000 System Fans Replacement	Version: 1.00
Installation Guide	Date: 12/07/2009

Proceed to snap the bezel back into place and reseal the LED connector.



Reattach the I/O Cover Plate after making sure that all cables are correctly seated.

#### **4. Service Completion**

After service to the machine is complete, it is necessary to boot the machine to verify proper operation. If at any point assistance is required, please see contact information section.

#### **5. Contact Information**

Should you run into any problems, please contact the Product Development Team immediately.

##### **Product Development**

Email: [Product.Development@posiflexusa.com](mailto:Product.Development@posiflexusa.com)

Tel: (888) 968-1668

Fax: (510-475-0982

..... Or just walk over and get us.

TP5800/TP8000 System Fans Replacement	Version: 1.00
Installation Guide	Date: 12/07/2009

- End -